

# ROHO NDIYO ITIAYO UZIMA 02.

Wimbo wa katikati: Dominika ya 3, Mwaka C wa kanisa

Zab. 19 : 7 - 9 , 14 ( K ) Yn 6 : 63

Given Justine M.  
06/01/2025  
Ilazo Parish, Dodoma

*Moderato*

Ro ho ndi yo i ti i ti a yo u zi ma ma ma ne no

i ti

1. 2.

Detailed description: This system contains the first two lines of the musical score. It features a treble and bass staff with a 2/4 time signature and a key signature of one sharp (F#). The melody is written in the treble clef, and the accompaniment is in the bass clef. The lyrics are written below the treble staff. The first line ends with a double bar line and a repeat sign, followed by two first and second endings.

ha yo ni li yo wa a mbi a ma ne no ha yo ni li yo wa a mbi a ni

Detailed description: This system contains the third and fourth lines of the musical score. It continues the melody and accompaniment from the first system. The lyrics are written below the treble staff. The system ends with a double bar line.

ro ho ni - ro ho te na ni u zi ma ma ne no ma

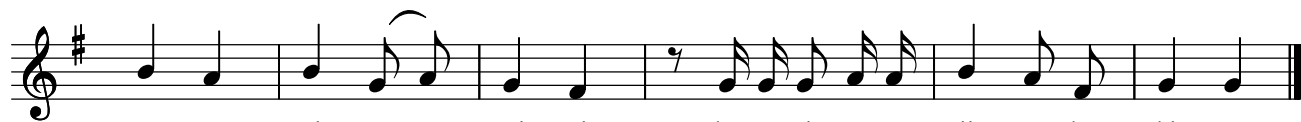
te na

1. 2.

Detailed description: This system contains the fifth and sixth lines of the musical score. It continues the melody and accompaniment. The lyrics are written below the treble staff. The system ends with a double bar line and two first and second endings.



1. She ri a ya Bwa na ni ka mi li fu hu i bu ru di sha na fsi ya ngu u shu hu da wa



Bwa na ni a - mi ni hu m ti a m ji nga he ki ma



2. Ki cho cha - Bwa na ni ki ta ka ti fu ki na - du - mu mi le le hu ku mu za



Bwa na ni - sa fi zi na ha ki ka bi sa



3. Ma a gi zo ya Bwa na ni ya a di li hu u fu - ra hi sha mo yo a mri ya



Bwa na ni - sa fi hu ya ti a ma cho - nu ru

4.Ma ne no ya ki nywa cha ngu na ma wa zo ya mo yo wa ngu ya pa te ki ba li mbe le

za ko Ee Bwa na mwa mba mwa mba - wa ngu na mwo ko zi mwo ko zi wa ngu