



MANA NUNGIRIRE IKIGONGWE

By: IRA. M. Jules

Le 09/ 02/ 2021

Chorale: St. A. Marie

Camp de Refugies Nyarugusu

Ururirimbo rwo mu

"Karema"

♩ = 75

(*)Ma na mfi se ntu ra b'a ka bi na ko ze ni je na
tu mye wi - cwa ru bi - Ma na mfi

7

se ngi ri r'i ki go ngwe Nu ngi ri re i ki go -

(Mu ka ma)

13

ngwe nu ngi ri re i ki go - ngwe ngwe

(na ra gu cu mu ye ko) (Ma na - mfi se)

20

Uhej'ugirako~na~Free~Organ~ugac'uteranya~n'igitero

21

(**)Nd'u mu nya bi cu mu ro Ma - na i bi cu mu ro vya nje bi ra nki ki

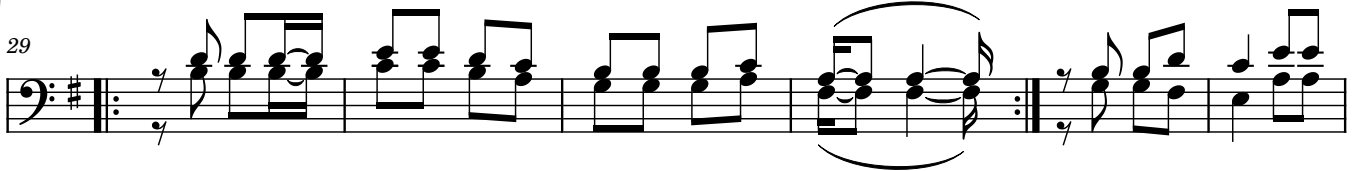
28

je

(Mu ka ma)

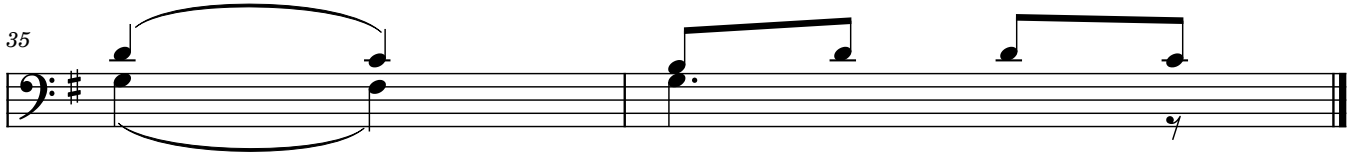
2

29



(***)Ni we we u sho bo ra ku ngi ri ra i ki go ngwe
na ra gu cu mu ye ko Mu ka ma Ma na nu ngi ri re i ki

35



go - - - ngwe (Mu ka ma)

"Imana nitugirire ikigongwe"

(+25767899059 , +255758272224)
Rwanditswe na: JIRAM