

Aleluya

Huruma ya Mungu ni ya Milele

David B. Wasonga

January, 2016

Moderato

Musical notation for the first system of the hymn. It consists of two staves: a treble clef staff and a bass clef staff. The key signature is one sharp (F#) and the time signature is 2/4. The melody in the treble staff is: A4 (quarter), le4 (quarter), lu4 (quarter), ya4 (quarter), A4 (quarter), le4 (quarter), lu4 (quarter), ya4 (quarter), A4 (quarter), le4 (quarter), lu4 (quarter), ya4 (quarter), A4 (quarter), le4 (quarter). The bass staff provides accompaniment with chords and single notes.

Musical notation for the second system of the hymn. It consists of two staves. The treble staff melody is: lu4 (quarter), ya4 (quarter), a whole rest, Hu4 (quarter), ru4 (quarter), ma4 (quarter), ya4 (quarter), Mu4 (quarter), ngu4 (quarter), ni4 (quarter), ya4 (quarter), mi4 (quarter), le4 (quarter), le4 (quarter), A4 (quarter), le4 (quarter). The bass staff accompaniment continues with chords and single notes.

Musical notation for the third system of the hymn. It consists of two staves. The treble staff melody is: lu4 (quarter), ya4 (quarter), A4 (quarter), le4 (quarter), lu4 (quarter), ya4 (quarter). The bass staff accompaniment continues with chords and single notes.

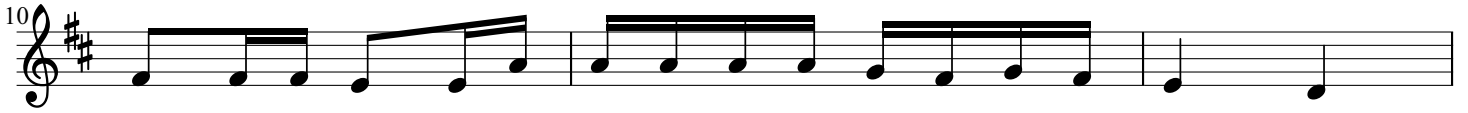
Mashairi-Aleluya-Huruma ya Mungu



1.E Bwa na Ye su Kri sto tu o ne she u so wa ko wa hu ru ma



na si tu ta o ko ka na si tu ta o ko ka ji cho la ko li li lo she



he ni u pe ndo li tu fu ndi she mo yo wa hu ru ma



2.E Bwa na Ye su Kri sto pe le ka ro ho wa ko Mta ka ti fu



u tu we ke wa kfu u tu we ke wa kfu i li ju bi le i ya



mwa ka wa hu ru ma i we ju bi le i ye nye ne ma



3.Ju bi le i hi i i tu we ze she ku ta mbu a mo yo wa

30

to ba, na mo yo wa m sa ma ha i li Ka ni sa la ko li ta mbu e, za

35

wa di hi i u lo' tu a chi a.