

NINAKULILIA

Sabinus Mnyonge
Improved by Shanel Komba
30.01.2015
Muhimbili, Dar es Salaam

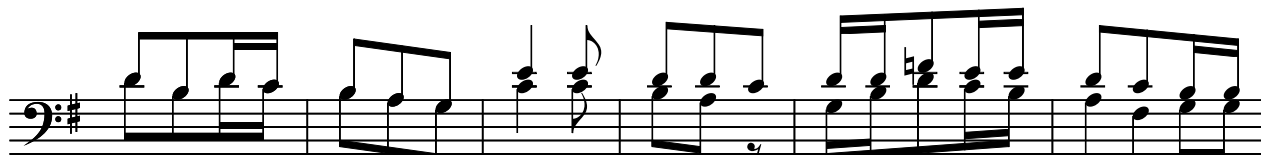
Moderato

Ni-na-ku-li li - a ni-na-ku-li li - a (Bwa-na) Si-ki-li - za sa

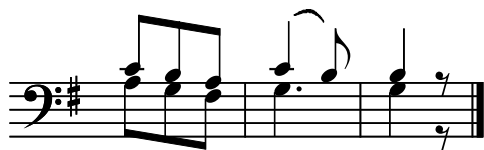
u - ti ya ki - li - o cha-ngu cha-ngu si - ki - li - za Bwa -

na ki - li - o cha - ngu njo - o Bwa-na njo - o Bwa-na njo - o Bwa-na ni - o

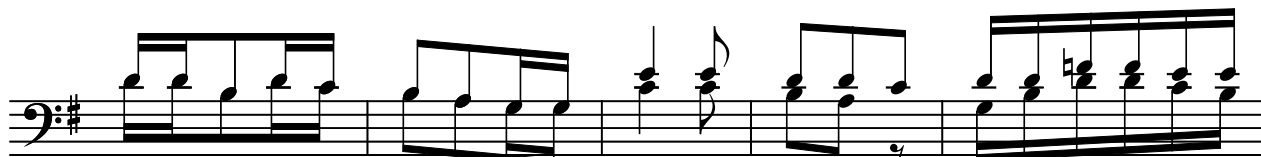
ko - e njo - o Bwa-na njo - o Bwa-na njo - o Bwa-na ni - o ko - e



1. Ni - na - ku - li - li - a ni - ki - wa chi - ni si - ki - li - za sa - u - ti ya ki



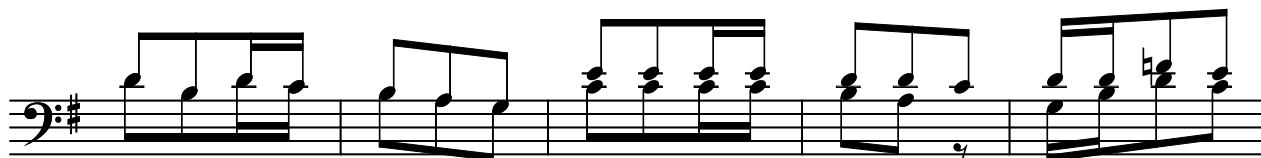
1. li - o cha - ngu.



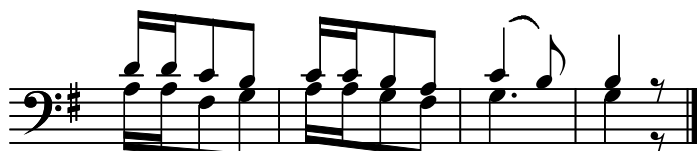
2. U - si - ni - fi - che u - so u - so wa - ko Bwa-na ni - si - je ni - ka - fa



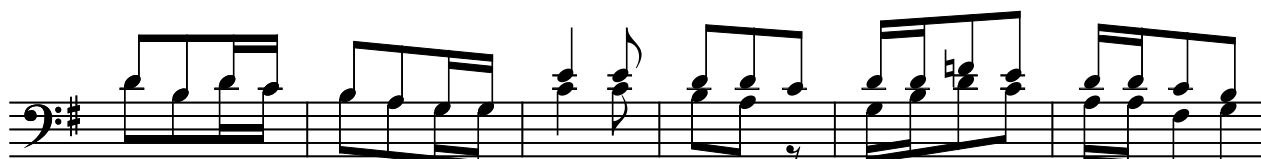
2. na-na na-o washu - ka - o shi - mo - ni



3. U - ni - ju - li - she ni - e - nde nji - a i - pi kwa ma - a - na



3. na - ku - i - nu - li - a ro - ho ya - ngu



4. U - ni - o - ko - e na a - du - i za - ngu Ee Bwa-na na - ku - tu - ma



4. i - ni - a we - we