

Maskini huyu
Dominika ya 30 C
Zab. 34:1-2, 16-18, 22, (K) 6

EFLOM
Oct, 2025

$\text{♩} = 100$

Ma ski ni hu yu a li i ta Bwa na
ma ski ni hu yu

5

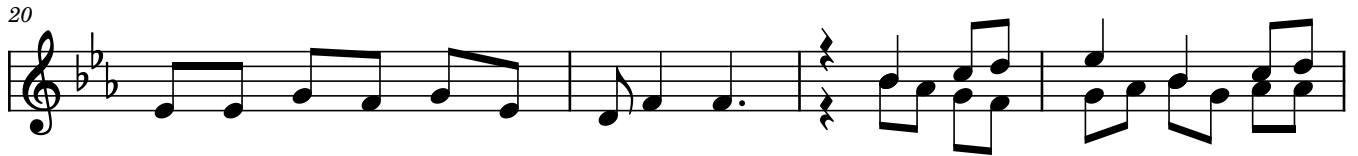
a li i ta Bwa na a ka si ki a a li i ta Bwa na

11

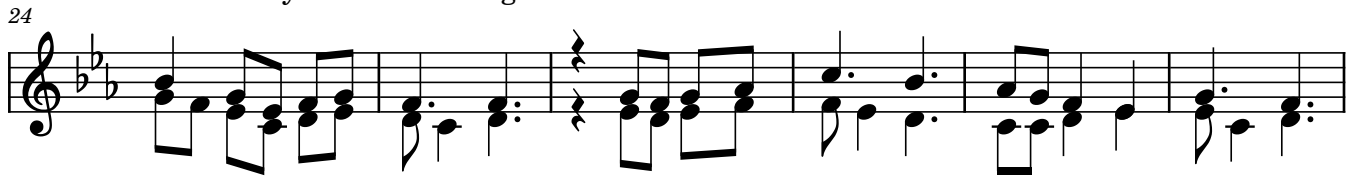
a li i ta Bwa na a ka si ki a.

15

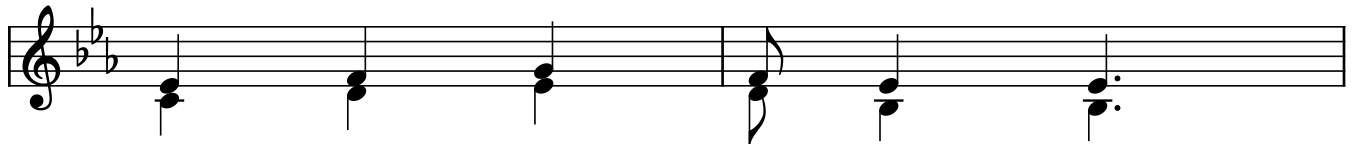
1.Ni ta m hi mi di Bwa na ki la wa ka ti si fa za ke



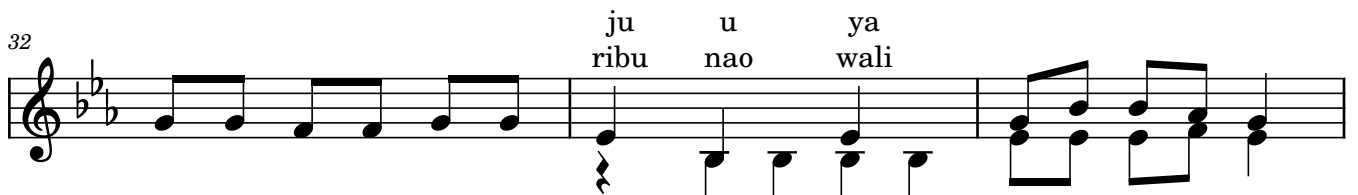
zi ki nywa ni mwa ngu da i ma. ka ti ka Bwa na na fsi



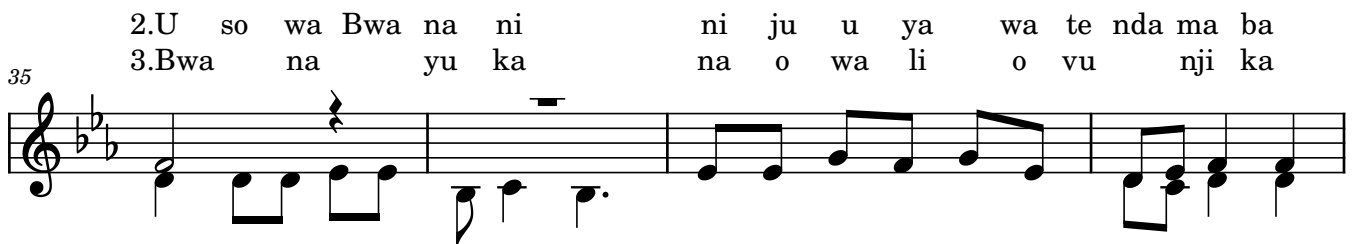
ya ngu i ta ji si fu wa nye nye ke vu wa ka si ki e



wa ka fu ra hi.



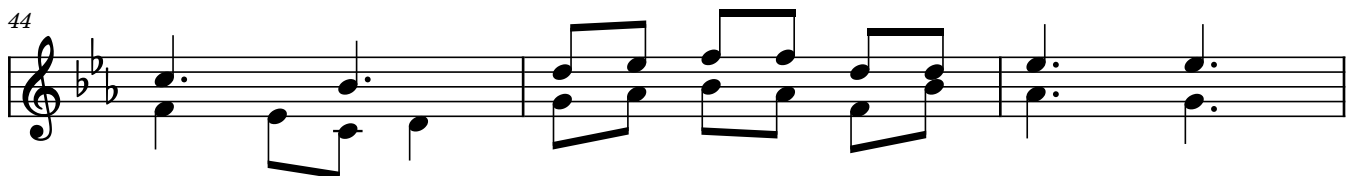
ju u ya wa te nda ma ba
ribu nao wali



2.U so wa Bwa na ni ni ju u ya wa te nda ma ba
3.Bwa na yu ka na o wa li o vu nji ka



wa li ka li a na ye Bwa na a ka si ki a 2.a ka wa
Bwana hu zi ko mboa na fsi za wa tu mi shi wa ke



po nya na ta a bu za o zo te



3.wa la ha wa ta hu ku mi wa wo te wa m ki mbi li a o.