

# NITAKUSHUKURU

Shukrani/Matoleo

Mwl Leo Lyimo,

Kalambo ss

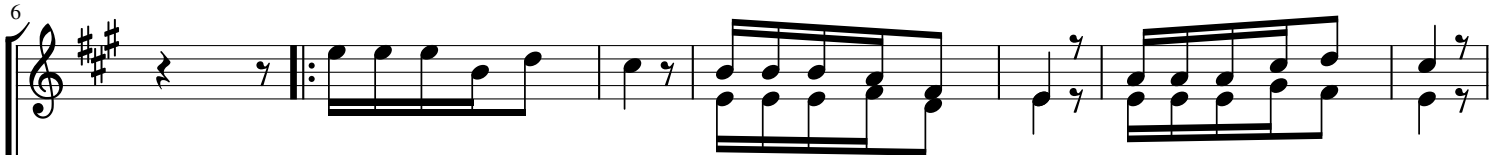
0759417754

22..3.2026

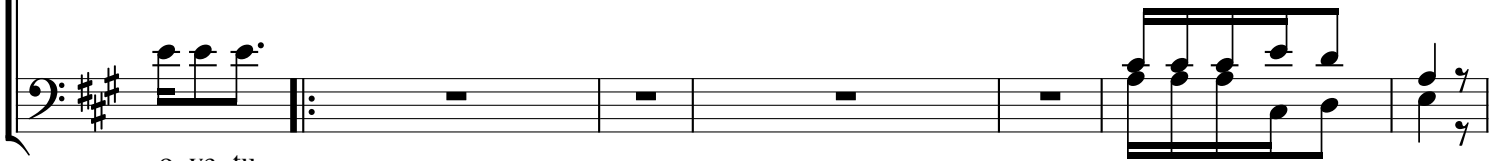
$\text{♩} = 70$



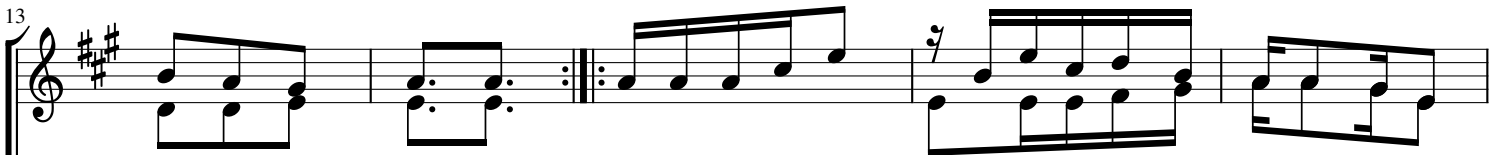
Ni ta ku shu ku ru ee Mu ngu aah eeh aah eeh mi mi na kwa ma to le  
mi - na Ba ra ka ee Mu ngu aah eeh aah eeh



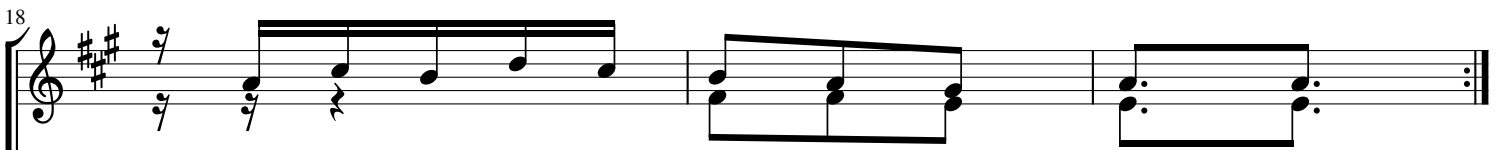
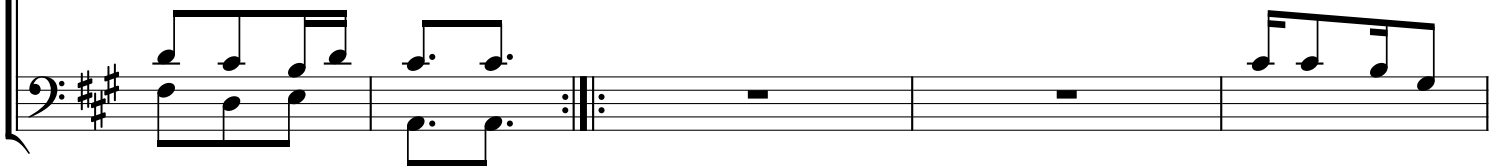
Ni ta ku shu ku ru ee - Mu ngu wa ngu ni ta ku shu ku ru  
Po ke a za wa di ni li zo a nda a zo te ma li ya ko



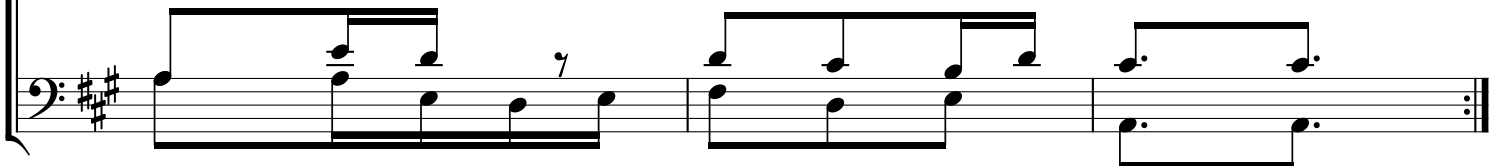
o ye tu



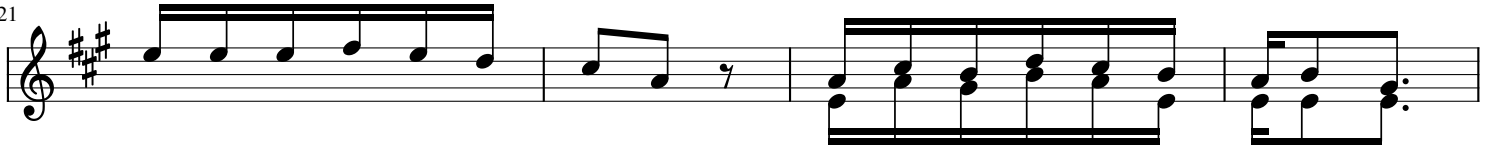
ee Mu ngu wa ngu Po ke a Ba ba na le ta kwa - mo yo ra dhi  
na le ta kwa ko Sa da ka ya ngu ma ji to le o pi a za ka



na o mba Ba ba u - po ke e  
na o mba Ba ba u - po ke e

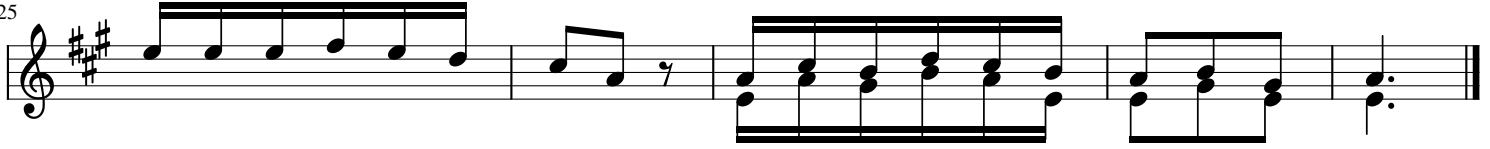


21



1.Ni ta ku shu ku ru Bwa na kwa A fya te le u lo ni pa  
 2.Ne e ma ya ko ya to sha Bwa na u me ni pi ga ni a  
 3.Ka ti ka fu ra ha Bwa na pi - a ka ti ka hu zu ni

25



mbe le ya mi u ngu Bwa na ni ta ku i mbi a za - bu ri  
 ni ta ku shu ku ru Bwa na si ku zo te za ma i sha ya ngu  
 ni ta si fu ji na la ko ni ta shu ku ru mi le le yo te