

ULIMI WANGU

GOLDEN J.SIMKONDA

3-03-2024

USHIRIKA-MBOGWE.

Andante

U li mi wa ngu na u na u ga nda ma

p *mp* *mf*

p *mf*

ga

Detailed description: This system contains the first two staves of music. The top staff is in treble clef with a key signature of one sharp (F#) and a 2/4 time signature. The bottom staff is in bass clef with the same key signature and time signature. The melody in the top staff begins with a piano (*p*) dynamic, moves to mezzo-piano (*mp*) for the word 'ngu', and then to mezzo-forte (*mf*) for 'na u na u'. The lyrics are 'U li mi wa ngu na u na u ga nda ma'. The word 'ga' is written above the final note of the first staff. The piano accompaniment in the bottom staff starts with a piano (*p*) dynamic and becomes mezzo-forte (*mf*) in the second measure.

ne na ka ka la ki nywa changu ni si po kuku mbu ka.

f *ff* *mf* *mp*

4

Detailed description: This system contains the third and fourth staves of music. The top staff continues the melody from the first system, starting with a mezzo-forte (*mf*) dynamic and reaching fortissimo (*ff*) for the word 'ka la ki'. The lyrics are 'ne na ka ka la ki nywa changu ni si po kuku mbu ka.'. The piano accompaniment in the bottom staff starts with a forte (*f*) dynamic and reaches fortissimo (*ff*) for 'ka la ki', then returns to mezzo-piano (*mp*) for the rest of the system. A measure rest is indicated by a '7' above the staff in the second measure of the top staff.

1.Kando ya mi to ya Babe li ndi ko tu li koke ti tuka li a tu li

mf

10

Detailed description: This system contains the fifth and sixth staves of music. The top staff continues the melody with a mezzo-forte (*mf*) dynamic. The lyrics are '1.Kando ya mi to ya Babe li ndi ko tu li koke ti tuka li a tu li'. The piano accompaniment in the bottom staff continues with a mezzo-forte (*mf*) dynamic. A measure rest is indicated by a '7' above the staff in the second measure of the top staff.

po i kumbuka ku mbuka sayu ni ka ti ka mi ti i li yo kati ka ti ya

f

15

Detailed description: This system contains the seventh and eighth staves of music. The top staff continues the melody with a forte (*f*) dynamic. The lyrics are 'po i kumbuka ku mbuka sayu ni ka ti ka mi ti i li yo kati ka ti ya'. The piano accompaniment in the bottom staff continues with a forte (*f*) dynamic. A measure rest is indicated by a '7' above the staff in the second measure of the top staff.

ke tu li vi tu ndi ka vi nu bi vye tu ka ti tu.

f

21

Detailed description: This system contains the ninth and tenth staves of music. The top staff continues the melody with a forte (*f*) dynamic. The lyrics are 'ke tu li vi tu ndi ka vi nu bi vye tu ka ti tu.'. The piano accompaniment in the bottom staff continues with a forte (*f*) dynamic. A first ending bracket is shown above the top staff, with a second ending bracket below it. A measure rest is indicated by a '7' above the staff in the second measure of the top staff.

2.Maa na hu ko wa li o tuchuku a ma te ka wa li ta ka tu wa

mf

26

Detailed description: This system contains the eleventh and twelfth staves of music. The top staff continues the melody with a mezzo-forte (*mf*) dynamic. The lyrics are '2.Maa na hu ko wa li o tuchuku a ma te ka wa li ta ka tu wa'. The piano accompaniment in the bottom staff continues with a mezzo-forte (*mf*) dynamic. A measure rest is indicated by a '7' above the staff in the second measure of the top staff.

31



f
i mbi e na wa li tu o ne a wa li ta ka fu ra ha tu i mbi

36



e ni ba a dhi ya nyi mbo za sa yu ni *f* na wa li ni.

40



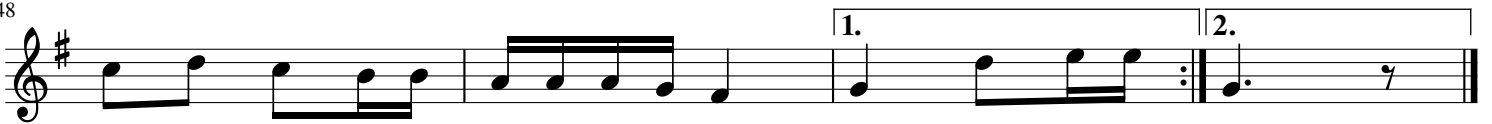
mf
3. Tu u i mbe je wi mbo wa Bwana ka ti ka n chi ya u ge ni Ee Ye ru

44



sa le mu ni ki ku sa ha u we we mko no

48



wa ngu wa ku u me na u sa ha u *f* Ee Ye ru u.