

# NINAJONGEA

## Komunyo

Sylivester Makongo (SM)

Kilombero Parish

13.06.2026

Moderato

♩ = 54

1.

2.

*Piano*

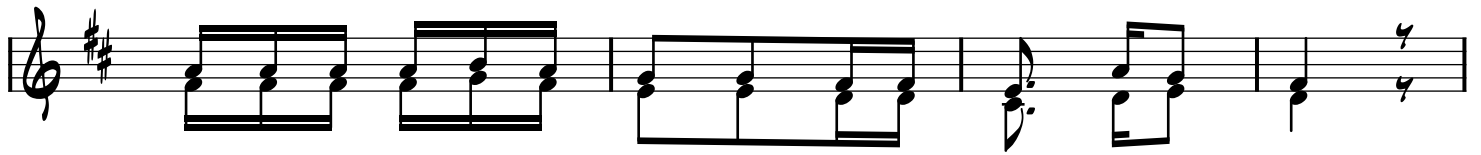
Ni na jo nge a mbele ya ko Bwa na na

Mu ngu wa ngu

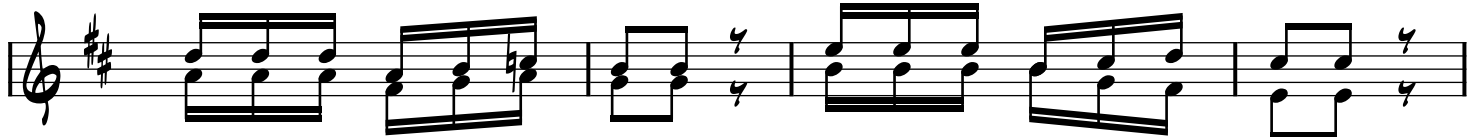
u ni po ke e Bwa na ni na ku ja kwa mo yo wa u ka ri mu Ni shi

ri kimwili na da mu ni we ze kupa ta u zi ma Ni shi ri kimwili na

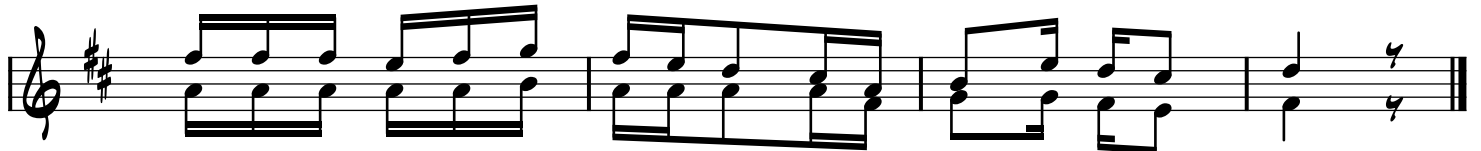
da mu ni shi bi shwe Ee Bwa na Ni shi na.



1. U li se ma a u la ye mwi li wa\_\_\_\_\_ ngu
2. Mwi li wa ko Ye su wa ngu ni\_\_\_ cha\_\_\_ ku la
3. Da mu ya ko Ee\_\_\_ Ye su ni ki nywa ji sa fi



1. na ku i nywa da mu ya ngu na ku i nywa da mu ya ngu
2. ki li cho shu ka ku to ka mbi ngu ni a se ma Bwa na
3. ha ki ka ya bu ru di sha ya\_\_\_ bu ru di sha na fsi



1. ndi ye a ta ka ye pa ta u zi\_\_\_ ma wa mi le le.
2. a la ye cha ku la hi ki a ta\_\_\_ i shi mi le le.
3. ni da mu a zi zi pi\_\_\_ a ye nye tha ma ni ku bwa.