

KARIBUNI WAGENIWETU.

BY Pascal M, Ngaragare

22/6/2026

Bwawani Morogoro.

0718 07 64 67.

♩ = 75

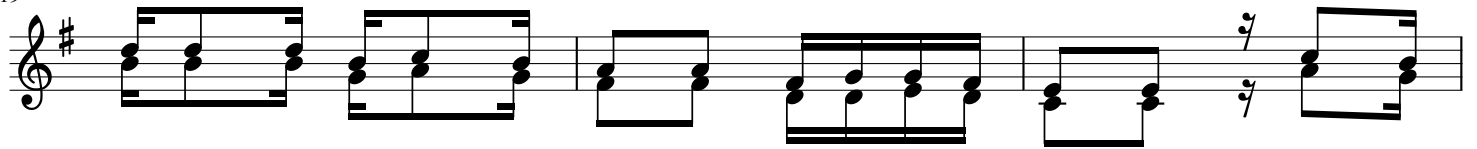
Musical notation for the first system, measures 1-4. The piece is in 2/4 time with a key signature of one sharp (F#). The melody is written in the treble clef and the accompaniment in the bass clef. The lyrics are: Ka ri bu ni wa - ge ni we tu ka ri bu ni wa ge ni we tu.

Musical notation for the second system, measures 5-9. The melody continues in the treble clef and the accompaniment in the bass clef. The lyrics are: ka ri bu - ni ka ri bu ni ka ri bu ni ka ri bu ni sa - ka ri bu ni sa -

Musical notation for the third system, measures 10-13. The melody continues in the treble clef and the accompaniment in the bass clef. The lyrics are: na Njo ni m ji si ki e ka ma m - po nyu - mba -

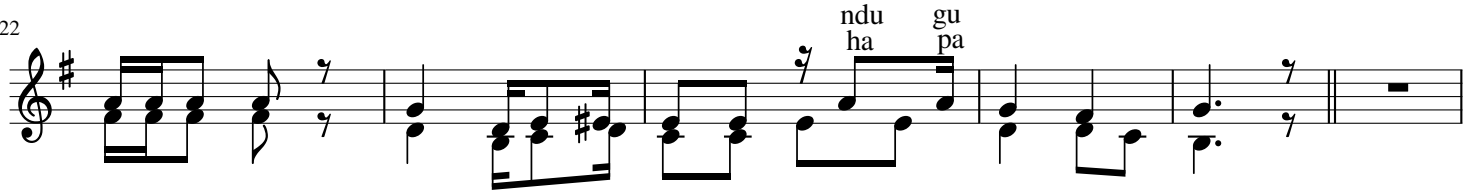
Musical notation for the fourth system, measures 14-17. The melody continues in the treble clef and the accompaniment in the bass clef. The lyrics are: ni ka ri bu - ni ka ri bu ni sa - na

19



1;Ni sa fa ri nde fu sa na m li yo i fa nya ku ja
 2;Ha li ma sha u li ya wa le i wa ha pa - wa wa

22



ha pa kwe tu, ku tu te mbe le a ndu gu ze nu.
 ka ri bi sha, ka ri bu ni sa na ha pa kwe - tu.