

EE MUNGU UNIOKOE

A.A.Kadyugenzi

DUCE-UDSM

14.07.2016

moderato

Jumapili ya 18 ya mwaka C

$\text{♩} = 80$

S
A

Ee Mu ngu u ni o ko e Ee - Bwa - na U ni -

T
B

(Bwa na)

Detailed description: This block contains the first five measures of the song. It features two vocal staves (Soprano and Alto) and two piano staves (Tenor and Bass). The key signature is one sharp (F#) and the time signature is 2/4. The tempo is marked 'moderato' with a quarter note equal to 80 beats per minute. The lyrics are: 'Ee Mu ngu u ni o ko e Ee - Bwa - na U ni -'. The piano accompaniment consists of chords and moving lines in both hands.

6

sa i di e Hi ma ndi we m sa a da wa ngu na mwo ko

Detailed description: This block contains measures 6 through 10. The vocal parts continue with the lyrics: 'sa i di e Hi ma ndi we m sa a da wa ngu na mwo ko'. The piano accompaniment continues with similar harmonic support.

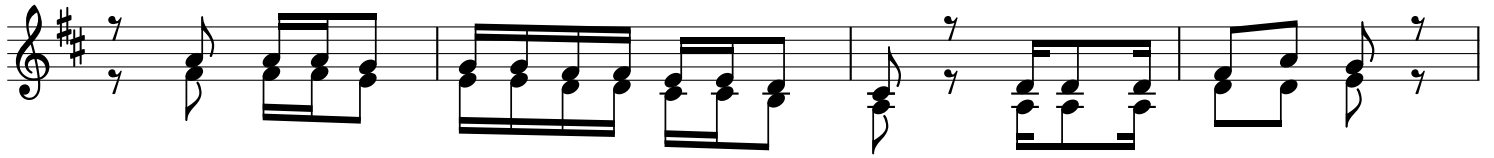
10

zi wa - ngu Ee Bwa na u si ka wi - e.

Detailed description: This block contains the final five measures (11-15) of the song. The vocal parts conclude with the lyrics: 'zi wa - ngu Ee Bwa na u si ka wi - e.'. The piano accompaniment ends with a final cadence.

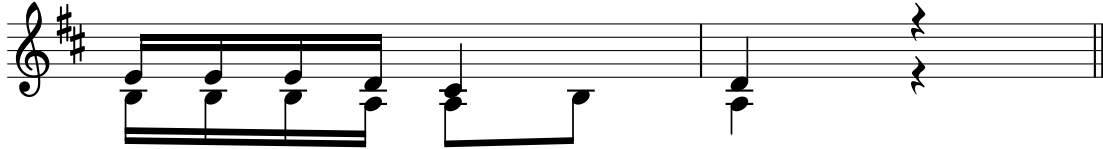
14

MAIMBILIZI



1. Wa na o nu i a ku ni a nga mi za na wa a i bi ke
 2. Ha o wa na o ta ma ni ni u mi e na wa pu mba zi ke
 3. Na mi ni li ye ma ski ni na fu ka ra u je ha - ra ka

18



na ku fe dhe he ka.
 kwa ku shi ndwa kwa o,
 Ee - Mu ngu wa ngu.