

SIKIA BINTI.

Venant Mabula

Mwanako

Zab.45:10.

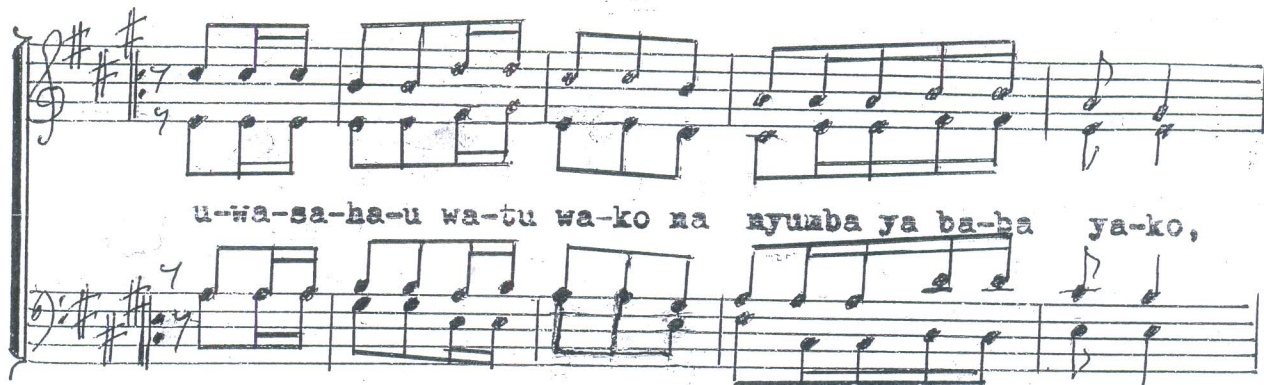
06.08.2015

DSM.

moderato.



Si-ki-a bi-ati u-ta-sa-me u-te-gesi-ki-o la-ko;



u-wa-sa-ha-u wa-tu wa-ko na nyumba ya ba-ba ya-ko,



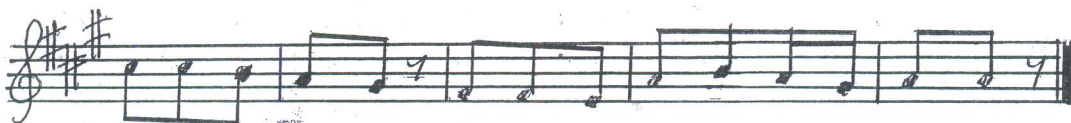
Na na ye m-falme ata-uta-mani sa-na u-zu-ri wa-ko: wa-ko.



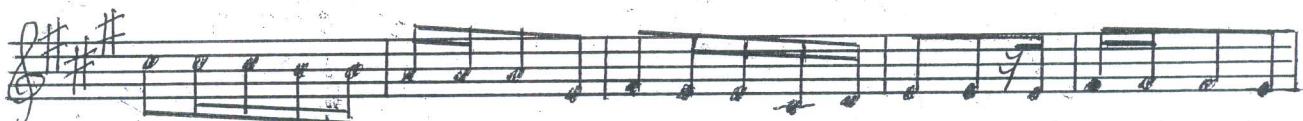
1.Ma-a-na ndiye bwana wa-ko mawe u-m- su-ju-di- e, Na-



biati Ti-ro a-na-le-ta ki-pa-wa cha-ke, na-o ma-ta



ji-ri wa wa-tu, wa-ta-ji-pe-nde-ke-za kwa-ko.



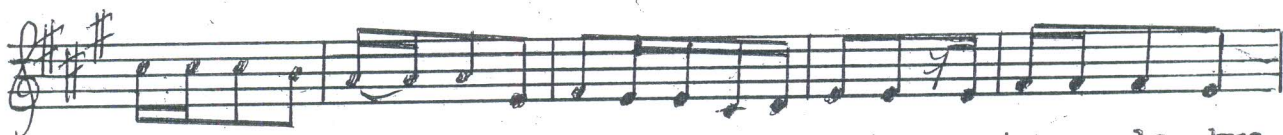
2. Bi-ati mfa-lme a-na-ku-ja a-na-faha-ri tu-pu, ma-va-zi ya-ke



ni ya nyuzi - za dha-ha-bu, a-ta-pe-le-kwa



kwa m-fa-lme na ma-va-zi, ya-li-yo fu-mwa kwa u-zu-ri.



3. Wana-wa-li we - nsake wa-na-o m-fu-a-ta, wa-ta-pe-le-kwa-



kwa-ke kwafu-ra-ha na shangwe, na ku-i-ngi-a ka-ti-ka-



nyu-mba, ka-ti-ka nyumba ya m-fa-lme.