

# HERI TAIFA

By G.Hanga

Ifakara parish 2004

He - ri he - ri Ta - i - fa He - ri A - mba - lo Bwa - na A - mba

He - ri He - ri Ta - i - fa A - - mba - - lo Bwa - na a - - mba - lo a - mba

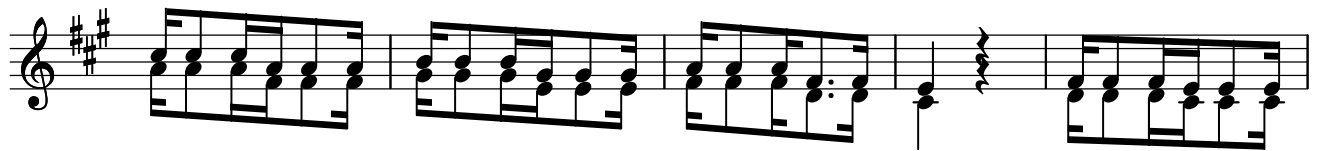
lo Bwa - na ni Mu - ngu wa - o o

**Organ**

1. M - pi - gi - e - ni bwa - na vi - ge - le - ge - le e - nyi we - nye ha - ki ku - si - fu ku - na - wa

1. pa - sa wa - nyo - fu wa mo - yo he - ri ta - i - fa a - mba - lo bwa - na Bwa - na ni Mu - ngu wa

1. o wa - tu a - li - o - wa - cha - gu - a ku - wa u - ri - thi wa - o



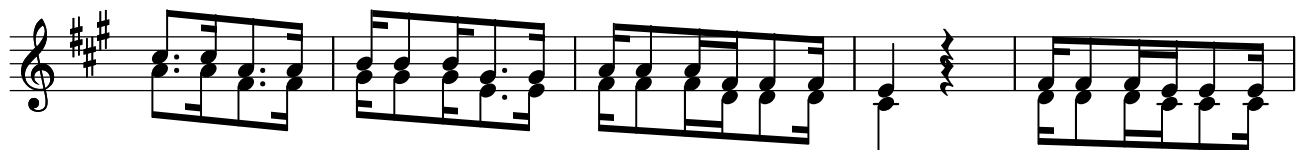
2. Ta-za - ma ji-cho la bwa-na la bwa-na li - ko kwa wa-m - cha - o wa-zi - ngo-je - a - o



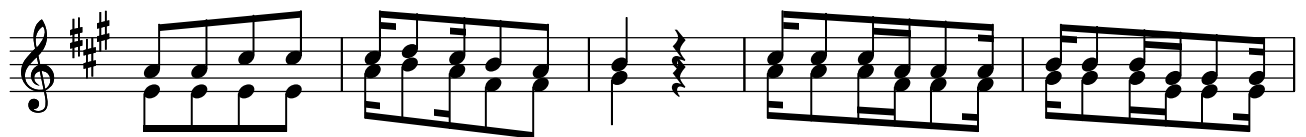
2. fa - dhi - li fa-dhi - li za - ke Ye-ye hu-wa-po - nya hu-wa - po-nya na - fsi



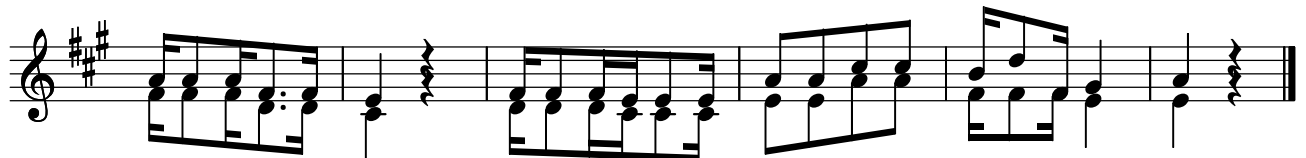
2. za-o na ma - u - ti na ku-wa hu - i - sha hu - i - sha wa - ka-ti wa nja - a



3. Na - fsi ze - tu zi-na - m-ngo - ja zi-na - m-ngo-ja Bwa - na, Ye-ye ndi-ye m - sa



3. a - da we - tu na nga - o ye - - tu Ee-Bwa-na fa-dhi - li za-ko fa-dhi-li za



3. ko zi - ka - e na - si ka-ma vi-le tu - li - vyo ku-ngo - ja ku-ngo-ja we - we