

WASTAHILI KUSIFIWA MUNGU

Dan. 3: 52-56

Fr. John W. Nsenye sds
Jordan university College
Morogoro 2014

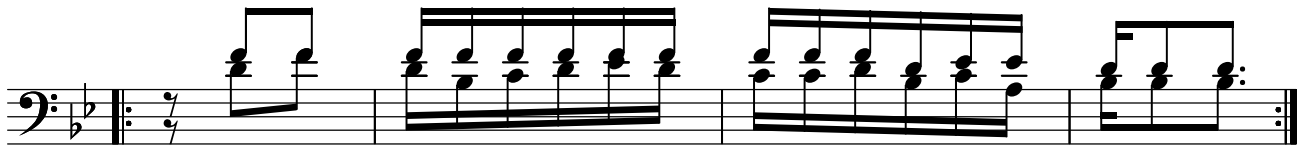
Wa sta hi li ku si fi wa ku si
ku si fi wa ku si
Wa sta hi li ku si fi wa ku si
ku si fi wa ku si

fi wa
fi wa
fi wa ku si fi wa na ku tu ku zwami le le.
fi wa

Mungu

1. U me hi mi di wa EeBwanaMungu wa Ba ba ze tu Mungu

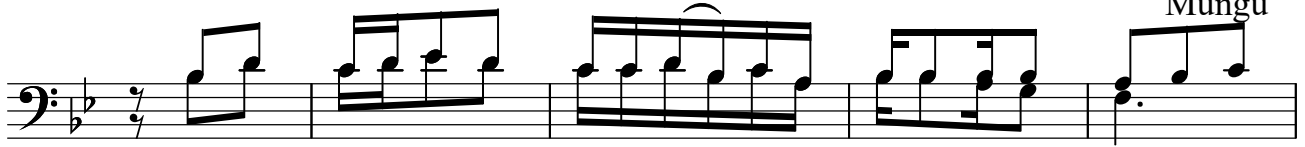
1. Li me hi mi di wa ji na la ko ta ka ti fu tu ku fu



1. Wasta hi li ku si fi wa na ku tu ku zwa- mi le le



2. U me hi mi di wa ka ti ka he ka lu la ko taka ti fu Mungu



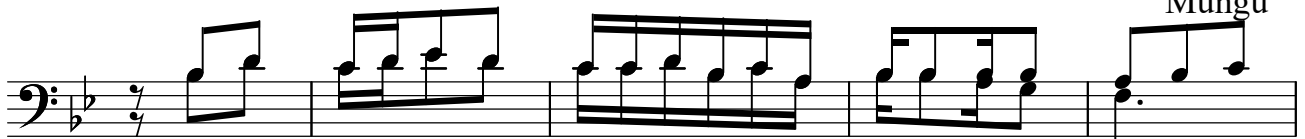
2. U me hi mi di wa juu ya - ki ticha u fa lmewa ko



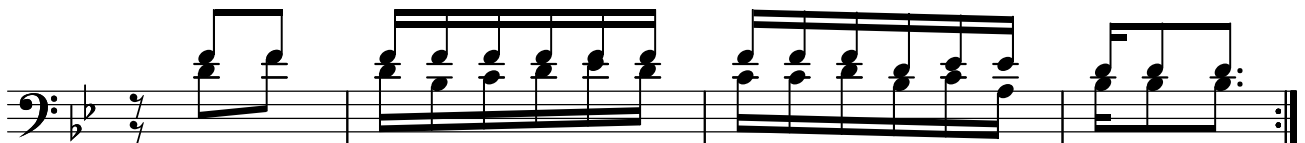
2. Wasta hi li ku si fi wa na ku tu ku zwa- mi le le



3. U me hi midi wa u ta zamayevi li ndi U keti yejuu yamakeru bi Mungu



3. U me hi mi di wa ka ti ka a nga la kolaMbingu ni



3. Wasta hi li ku si fi wa na ku tu ku zwa- mi le le