

# KWA AJILI YETU MTOTO AMEZALIWA

Isa 9:6

Kamanija Gervas Charles  
(KAGECHA Ng'wanajishiga)  
STEMMUCO, Mtwara  
10 December 2011

Dolce

*mf* Kwa a ji li ye tu m to to a me za li wa *f* m

*f* kwa a ji li ye tu m

to to a me za li wa *mf* m to to mwa na (m)u me *f* mwe nye u

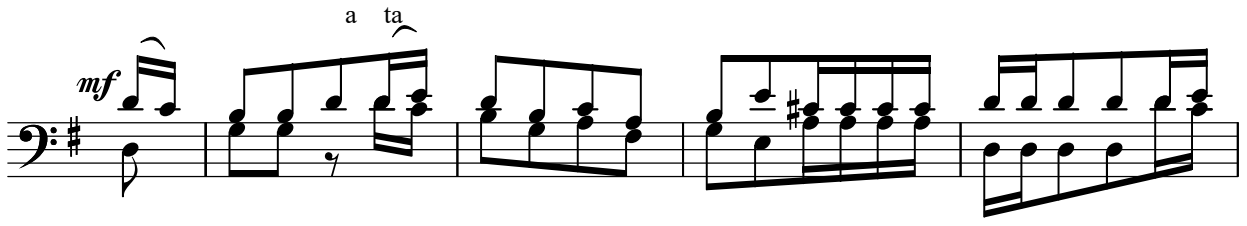
to to a me za li wa m to to mwa na mu me

*ff*  
we za mwe nye u we za mwe nye u we za mwe nye u we za mwe nye u

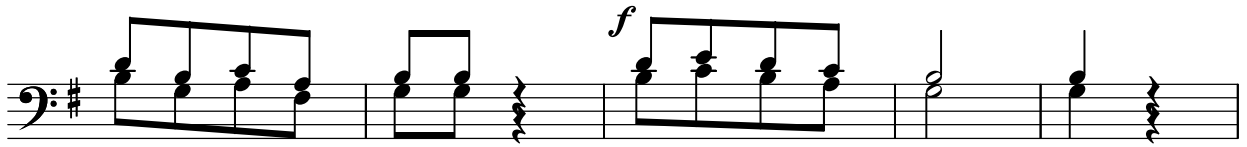
mwe nye u we za mwe nye u we za mwe nye u we za mwe nye u

*f* we za wa ki ki fa lme mwe nye u fa lme

we za wa ki fa lme fa lme



1. Na ye ye a ta i twa ji na la ke m sha u ri wa a ja bu a ta
2. Na ye ye a ta i twa ji na la ke m sha u ri wa a ja bu a ta
3. Na ye ye a ta i twa ji na la ke m sha u ri wa a ja bu a ta



i twa ji na la ke Mu ngu mwe nye ngu vu.  
i twa ji na la ke Ba ba wa mi le le.  
i twa ji na la ke mfa lme wa A ma ni.

kagecha06@gmail.com  
+255 755/715 685030  
+255 789 328222