

TWENDE TUKATOE SADAKA

By Stanslaus Mabula (SIMAMA)

BMC - Kigamboni Parish DSM

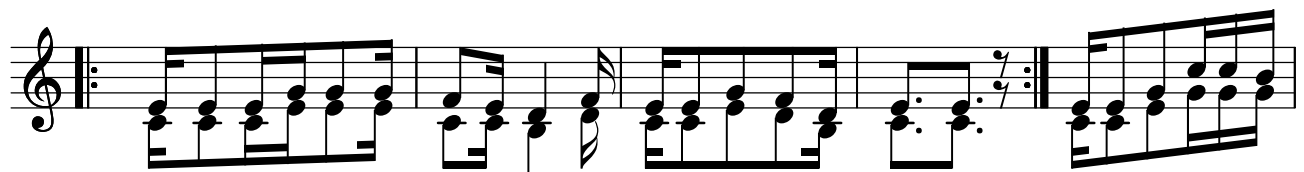
25 May 2014

0658 446 352

Two staves of music in 2/4 time. The top staff is the vocal line and the bottom staff is the piano accompaniment. The lyrics are: Twe nde ni twe nde ni tu ka to e sa da ka twe .. nde ni twe nde ... ni .. tu ka to e ..

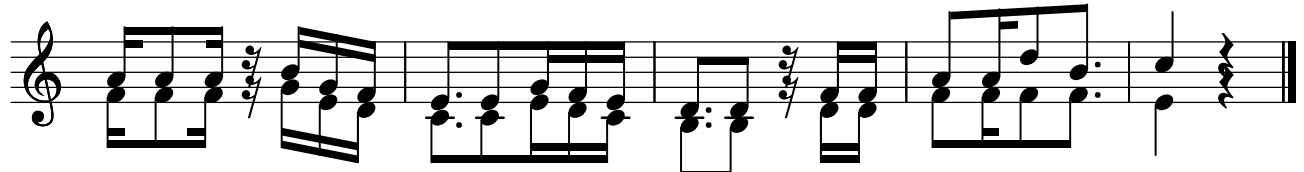
Two staves of music in 2/4 time. The top staff is the vocal line and the bottom staff is the piano accompaniment. The lyrics are: sa da ka ... kwa Bwa - na Ndi yo ka zi ya mi ko no ye tu ka zi ya mi ko no

Two staves of music in 2/4 time. The top staff is the vocal line and the bottom staff is the piano accompaniment. The lyrics are: no ye tu si si .. ni ka zi ye tu ndi yo ka zi ya mi ko no ... ya wa na da - mu.



1. Vi tu vyo te tu li vyo na vyo ... ni ma li ya .. Bwa na, Tu m to le e Mu
Tu me vi pa ta kwa ne e ma ... si a ki li ... ze tu,

2. U tu ku fu pi a na si fa ... ni za Mu ngu .. Mu ngu, Tu m to le e Mu
U ha i a me tu pa ti a ... bi la ma li po yoyo te,



ngu we tu sa da ka hi i i li yo sa fi wa la si o ma ba ki.

ngu we tu sa da ka hi i i li yo sa fi wa la si o ma ba ki.

Copied by

Process Faida

Alois gonzaga choir, Kigamboni Parish - DSM.

processfaida100@gmail.com

0715 754633 0762 367654