

# FURAHINI

Na Perfecto Mtuka

JMC FAMILY

Mbeya Parish

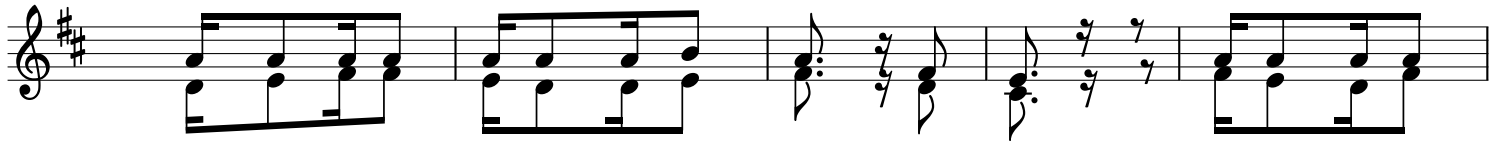
Musical score for the first system of 'FURAHINI'. It consists of two staves: a treble clef staff and a bass clef staff. The key signature is one sharp (F#) and the time signature is 6/16. The melody is written in the treble staff, and the bass line is in the bass staff. The lyrics are: 'Ka bu ri ni Tu fu ra hi ha yu mo [Te - na] a me fu fu ka so - te [Bwa - na] a me fu fu ka Fu ra hi ni na Mwoko zi we tu'. There are repeat signs and a double bar line with a repeat sign at the end of the system.

Musical score for the second system of 'FURAHINI'. It consists of two staves: a treble clef staff and a bass clef staff. The key signature is one sharp (F#) and the time signature is 6/16. The melody is written in the treble staff, and the bass line is in the bass staff. The lyrics are: 'ku i mbakwa sha le o ka fu ka ngwe ni ra ha ni ra ha - ha - ni ra ha - Ka fu'. There are first and second endings marked '1.' and '2.' with repeat signs. The lyrics 'Kwa - ni' and 'Kwe - li' are written below the second ending.

Musical score for the third system of 'FURAHINI'. It consists of two staves: a treble clef staff and a bass clef staff. The key signature is one sharp (F#) and the time signature is 6/16. The melody is written in the treble staff, and the bass line is in the bass staff. The lyrics are: 'fu ka a - le lu ya - ya'. There are first and second endings marked '1.' and '2.' with repeat signs.

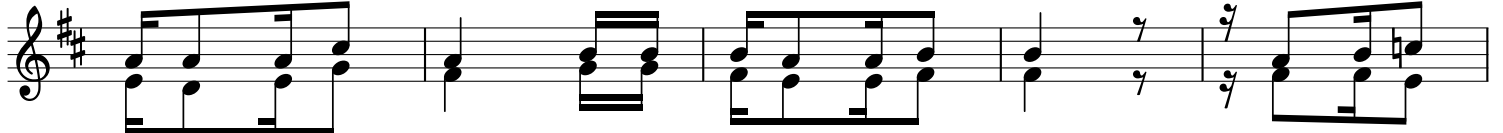
# MASHAIRI

15



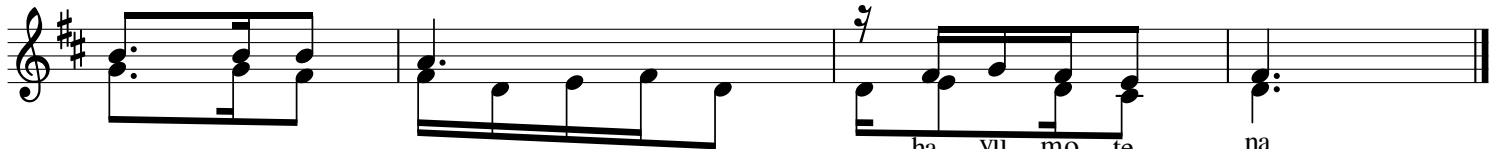
1. Tu m sa ngi li e Mwo ko zi we tu Ye su Kri sto  
2. A su bu hi ma pe ma a me to ka Bwa na Ye su  
3. Kwa u fu fu ko wa ke Bwa na Ye su tu me ko mbo

20



Mfu fu ka kwe li le o a me fu fu ka  
m zi ma u zi ma a me tu pa ti a Ka bu ri  
le wa ka ka ta ka mba za - ma u ti

25



li ko wa zi [Kwe li Bwa na] ha yu mo te na